



Opened as Condominiums, Spring 2006



Oceanfront view of the popular Caravelle Resort.



Ocean Boulevard view of an artist rendering of the proposed renovation of the Caravelle Resort, Myrtle Beach, SC. All renderings, maps, landscaping, elevations and plans are artist's conceptions. They are not to scale and are not guaranteed. The developer/builder reserves the right in its sole discretion to make changes or modifications to maps, plans, specifications, materials, features and colors without notice.



The angle oceanfront units on the south side overlook the outdoor pool

Onsite-Sales & Marketing By:



Call Today  
1-800-458-7890 or 843-692-3333



---

## The Caravelle Resort

Opening Spring 2006 as Refurbished Condominiums

In October 2005, Myrtle Beach's famous OCEANFRONT **Caravelle Resort, with its incredible Golden Mile location**, offered some 300 condominiums for sale through The Hoffman Group, Myrtle Beach's leading oceanfront condominium experts.

Kevin Warren, the development company's managing partner and resort manager for the past 19 years has overseen the most extensive and attractive renovation ever attempted for a condominium conversion in Myrtle Beach, according to Hoffman Group CEO David Hoffman.

"Over the past two years we have led the condominium conversion market representing such quality resorts as Breakers Boutique, Ocean Reef, Landmark, Pinnacle, Schooner, Boardwalk, Monterey Bay and Caribbean. I have to say that when I discovered the vision that has been developed by Mr. Warren and his partners for the property I got very excited. We've never seen anything like it. Not only are the units being virtually gutted but also the quality of the end product, evidenced by model units already finished is staggering!"

All units are oceanfront or ocean view with private balconies. Unit styles include studios, mini suites, and a variety of full one-bedroom suites. Custom designed high-end furnishings by American of Martinsville will be combined with granite counter tops in all kitchens and bathrooms, designer tile and carpet floorings, framed vanity mirrors, crown molding, designer housewares, lighting and accessories and fine quality beds with exquisite comforters, bedskirts, bolsters and coordinating drapes and top treatments. Flat screen LCD televisions and upholstered headboards bring a new dimension to the suites. Some units feature special additional touches like hand-painted murals, vessel sinks and designer faucets mounted in glass wall tile.

All owners enjoy the extensive indoor and outdoor water amenities of the resort. Additional amenities include the Santa Maria onsite full service restaurant, Liquids coffee and martini bar, exercise facility, game room, seasonal oceanfront poolside bar and grill, seasonal ice cream shop and a gift shop.

Unit closings began February, 2006 after the interior renovations were completed.

**CALL TODAY TO SPEAK WITH A SALES REPRESENTATIVE ABOUT BECOMING AN OWNER  
IN THIS AMAZING REDEVELOPED OCEANFRONT PROPERTY!**



Caravelle Resort's outdoor water amenities are popular throughout the season.



The indoor water facility on the 7th floor stays busy year-round!





The Caravelle Resort refurbishment in conjunction with conversion to condominiums is one of the most spectacular renovations The Hoffman Group has seen.

As seen in these photos from three model units, attention to detail -- from crown moldings to custom furniture design -- is the key to success!



All renderings, maps, landscaping, elevations and plans are artist's conceptions. They are not to scale and are not guaranteed. The developer/builder reserves the right in its sole discretion to make changes or modifications to maps, plans, specifications, materials, features and colors without notice.



The Caravelle Resort refurbishment in conjunction with conversion to condominiums is one of the most spectacular renovations The Hoffman Group has seen.

As seen in these photos from three model units, attention to detail -- from crown moldings to custom furniture design -- is the key to success!

All renderings, maps, landscaping, elevations and plans are artist's conceptions. They are not to scale and are not guaranteed. The developer/builder reserves the right in its sole discretion to make changes or modifications to maps, plans, specifications, materials, features and colors without notice.



The Caravelle Resort refurbishment in conjunction with conversion to condominiums is one of the most spectacular renovations The Hoffman Group has seen.

As seen in these photos from three model units, attention to detail -- from crown moldings to custom furniture design -- is the key to success!



All renderings, maps, landscaping, elevations and plans are artist's conceptions. They are not to scale and are not guaranteed. The developer/builder reserves the right in its sole discretion to make changes or modifications to maps, plans, specifications, materials, features and colors without notice.

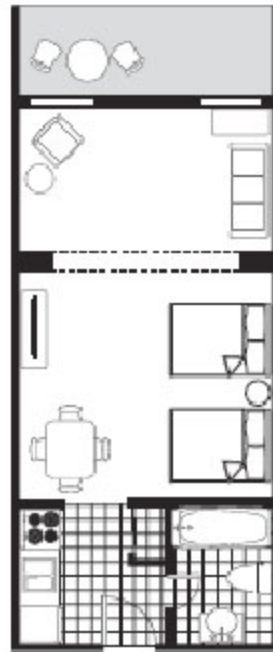




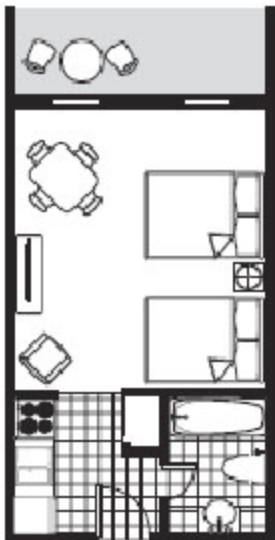
## UNIT STYLES/FLOOR PLANS



Unit A  
Angle Oceanfront  
Floors 7-15



Unit C-2  
Angle Oceanfront  
Floors 1-6



Unit C-1  
Oceanfront Efficiency  
Floors 5-15



Unit D  
Oceanfront  
Executive Suite  
Floors 7-15



Unit F  
Oceanfront Studio  
Floors 7-15

All renderings, maps, landscaping, elevations and plans are artist's conceptions. They are not to scale and are not guaranteed. The developer/builder reserves the right in its sole discretion to make changes or modifications to maps, plans, specifications, materials, features and colors without notice.



## UNIT STYLES/FLOOR PLANS



Unit B  
Oceanfront  
Deluxe 1 BD  
Floors 1-4



Unit B  
Oceanfront  
Deluxe 1 BD  
Floors 6-15



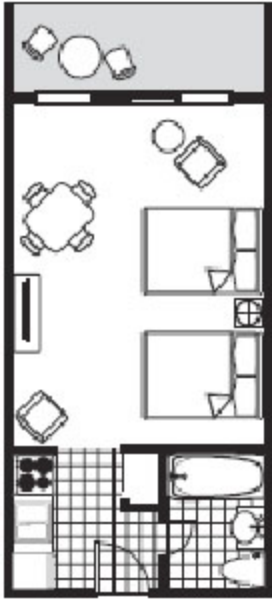
Unit B  
Oceanfront  
Deluxe 1 BD  
5th Floor

All renderings, maps, landscaping, elevations and plans are artist's conceptions. They are not to scale and are not guaranteed. The developer/builder reserves the right in its sole discretion to make changes or modifications to maps, plans, specifications, materials, features and colors without notice.



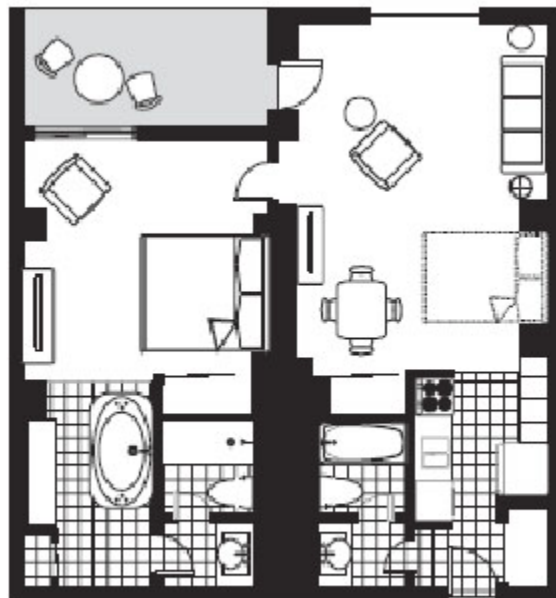


## UNIT STYLES/FLOOR PLANS



Unit C-6  
Oceanfront  
Efficiency  
Floors 1-4

Unit G  
Oceanfront  
Deluxe 1 BD/2BA  
Floors 1-4



All renderings, maps, landscaping, elevations and plans are artist's conceptions. They are not to scale and are not guaranteed. The developer/builder reserves the right in its sole discretion to make changes or modifications to maps, plans, specifications, materials, features and colors without notice.